

## BURDELL

### BRAND NEW SERVICE CENTRE

300

#### 30-42 Northshore Boulevard & 10 Market Street, Burdell

Blue Commercial is pleased to be marketing a brand new retail development in Townsville, incorporating bulky goods, quick service restaurants and a childcare centre. The proposed development is located within the epicentre of Stocklands' master planned community 'North Shore', neighboured by the Woolworths anchored North Shore Marketplace, Bunnings Warehouse, McDonalds and other national retail tenants.

#### Points of interest:

- New revamped plan catering for smaller tenancies from 72m<sup>2</sup> for food & beverage, health & wellness, medical & large format retail users
- Opportunities to join national operators including a pet care business, discount retailer, tyre and auto mechanic, childcare and two quick service restaurants
- Project due for completion Q3 2024\*
- 177 on-grade car parks
- Situated at the entrance to the 50% complete and sold out Stocklands Northshore development which has another 15 years to completion, doubling in size and ensuring growth for nearly two decades
- 100 metres from North Shore Market Place; a Woolworths anchored neighbourhood centre with 19 specialty tenants and adjacent to Bunnings, McDonalds and a newly completed 7-Eleven and Hungry Jacks.
- North Shore Town Centre is projected to service a population of 60,000\* people, with an annual growth rate of 4.85% (3 times the QLD average)
- A younger population catchment with higher per capita earnings at 18% more than the QLD average
- Located in the suburb of Burdell, approximately 16km north-east of Townsville CBD and approximately 25mins from the Townsville Airport via the Bruce Highway

For more information, please contact Exclusive Marketing Agents - Blue Commercial Herman Hunt & Sam Quintner

(\*approximately)

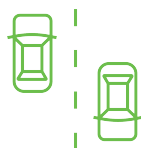
Find more [development opportunities](#).



Modern  
showroom  
opportunities



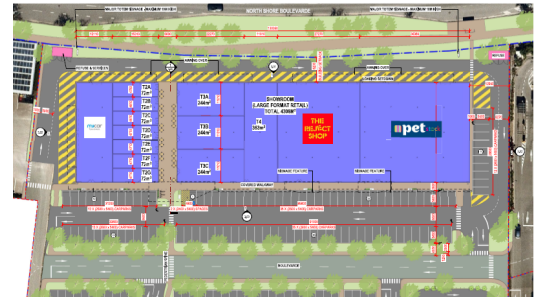
Townsville's  
growth area



Excellent  
exposure to North  
Shore Boulevard



Anchored by  
national tenants





**Herman Hunt**  
+ 61 401 043 413  
[herman.hunt@bluecommercial.com.au](mailto:herman.hunt@bluecommercial.com.au)