

WILLAWONG

COLD ROOM, FULLY RACKED
WAREHOUSE AND HARDSTAND
AVAILABLE FOR SUB-LEASE

1040

152 Paradise Road, Willawong QLD 4110

Blue Commercial are please to present a variety of available sublease spaces in the Acacia Link Industrial Estate at 152 Paradise Road, Willawong.

It is an ideal location for logistics users due to its close location to major arterials. Operators have to opportunity to lease 1040m2 of specialised high quality cold room. There is a further 4500m2* of concrete hardstand for vehicle and container storage. With limited supply in Willawong, act now to secure your place in the area's premier logistics facility.

Key features include:

- 1040m2 Cold room space across 4x temperature-controlled rooms with rapid door access
- 4x Power lift dock's (with brand new motors) for access
- On site container handler and 4500m2* concrete hardstand available
- Prime position near Logan , Ipswich, and Gateway Motorways to service SEQ region
- Pacific National and Linfox railheads under 10kms away
- HACCP Approved and ISO 9001 accredited
- ESFR Sprinklers
- 24/7 Camera Surveillance

The head tenant is also offering a range of services including pick and packing, loading and unloading etc. upon request.

These sub-lease spaces can be leased separately or in one line.

To find out more and to arrange an inspection then please reach out to the exclusive marketing agent from Blue Commercial.

*approx.



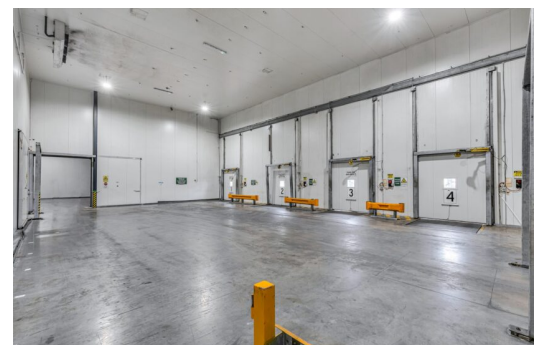
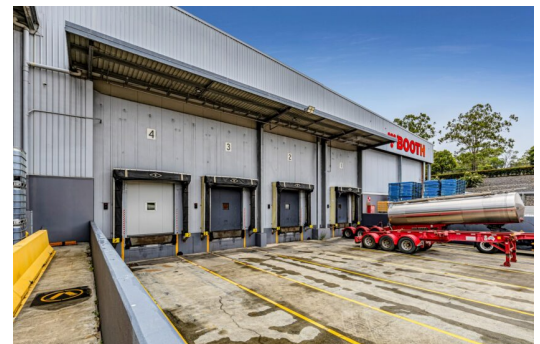
3500m2 of fully
racked
Warehouse



Warehouse
accessible via 3
roller doors



4x Power lift
dock's





Pete Uebergang
+61 447 007 744
peter.uebergang@bluecommercial.com.au



Patrick Morrey
+ 61 478 194 609
patrick.morrey@bluecommercial.com.au

